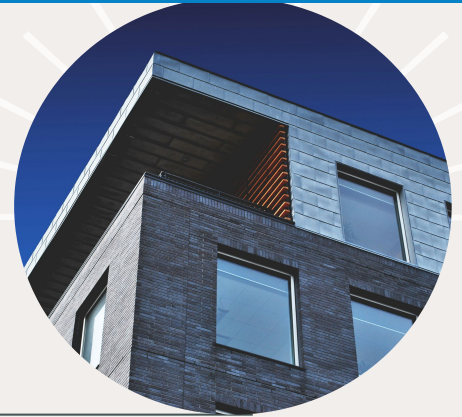


PASSIVE HOUSE STANDARD

What is a Passive House Standard (PHS)?

PHS is the top-tier standard for **energy-smart** and **climate-resilient** buildings. It applies to new and existing commercial and residential buildings, including multi-unit and single-family homes. Buildings constructed using the PHS are **energy-efficient**, **draft-free**, and **smoke-tight** – delivering comfort, fresh air, and energy use savings.



Design features

- Super insulation with no thermal leaks (ensuring full insulation value)
- Air-tight construction with filtered ventilation and energy recovery
- Better performing windows (ensuring saved-energy isn't lost)



Homeowner benefits

- Reduced noise pollution
- Exceptional indoor air quality
- Agreeable indoor temperature, year-round
- Low to non-existent greenhouse gas emissions
- Up to 80% savings in utility bills
- Proven resilience during power outages



Proposal

Implementing Passive House in Title 24

PHS can be introduced legislatively as an *alternative* compliance pathway to Title 24, facilitating an aggressive, climate-aware reach code. It's one strategy for opening the way to future-proofed, low-income housing.

See here for our [legislative brief](#).

Call to Action

We are forming a partner coalition

Please join us in our effort to get Title 24 revised and register your support [here](#).

